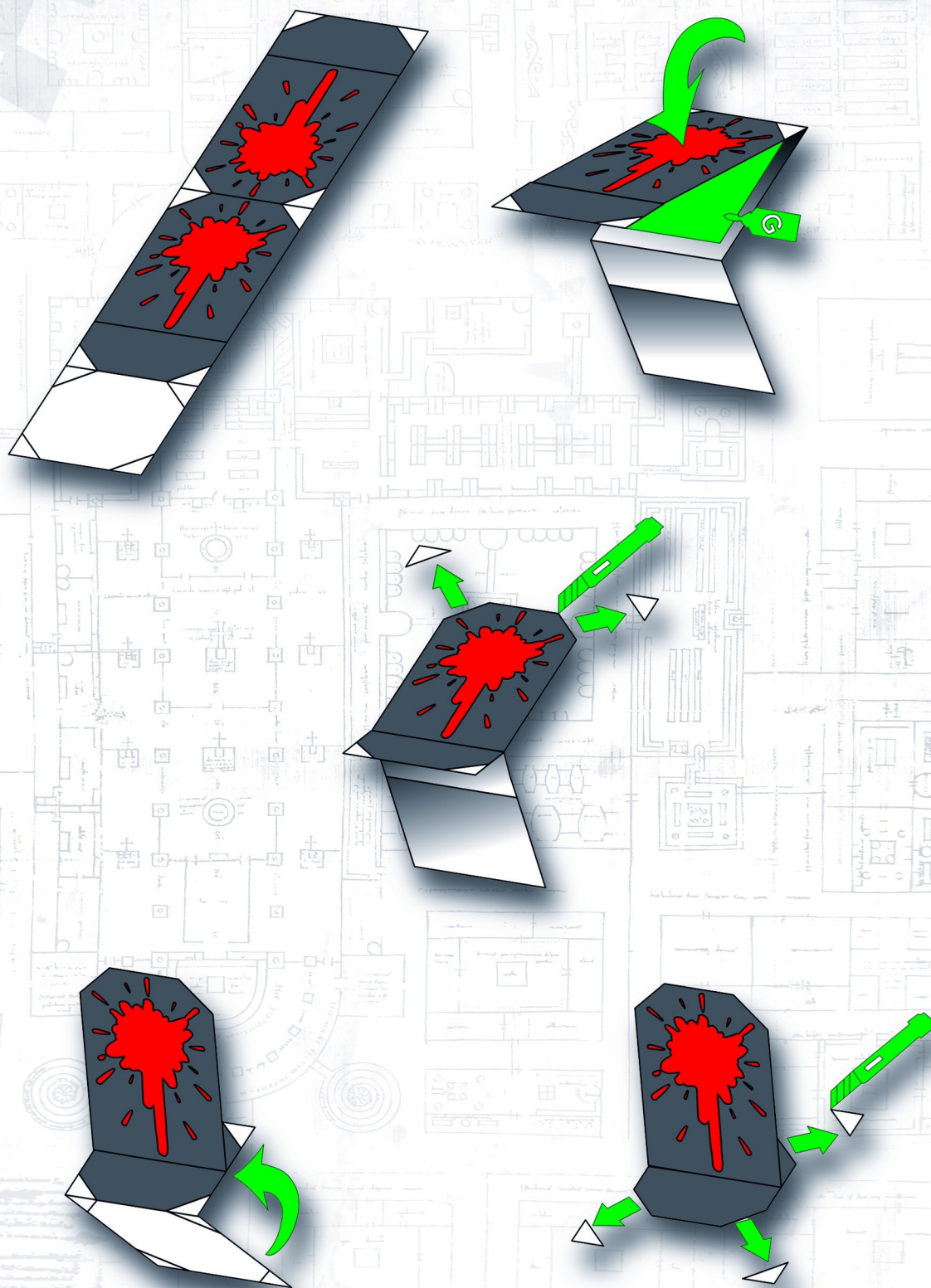




# Markers, Counters and Orders

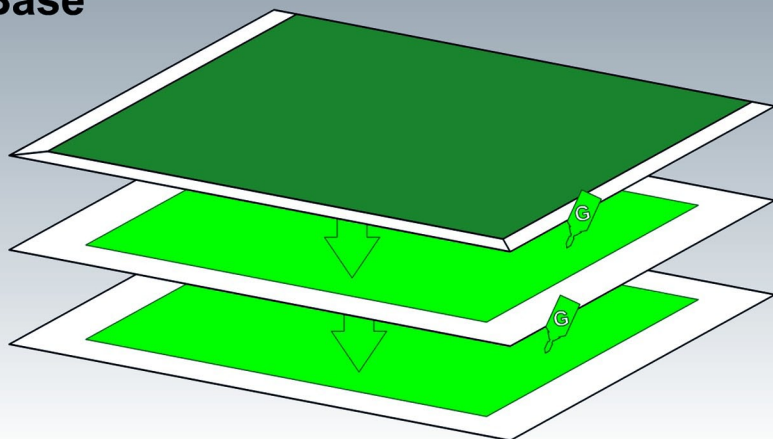
[www.worldworksgames.com](http://www.worldworksgames.com)







## Base

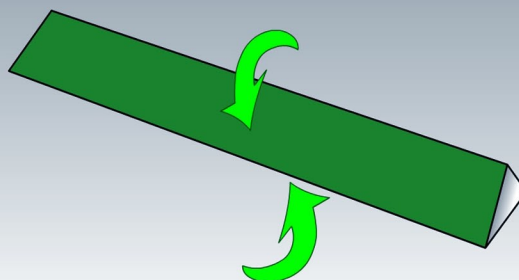
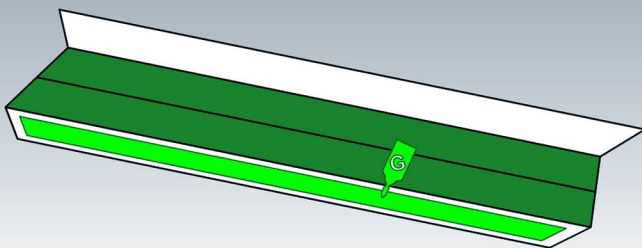


Glue additional layers of cardstock below base (minimum 2 recommended) for added strength

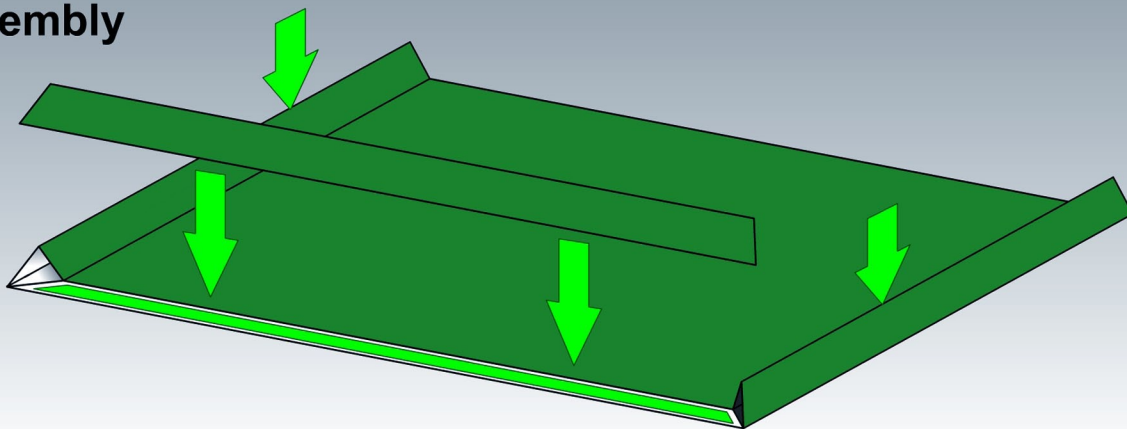
**OR**

Add foamcore support

## Rims

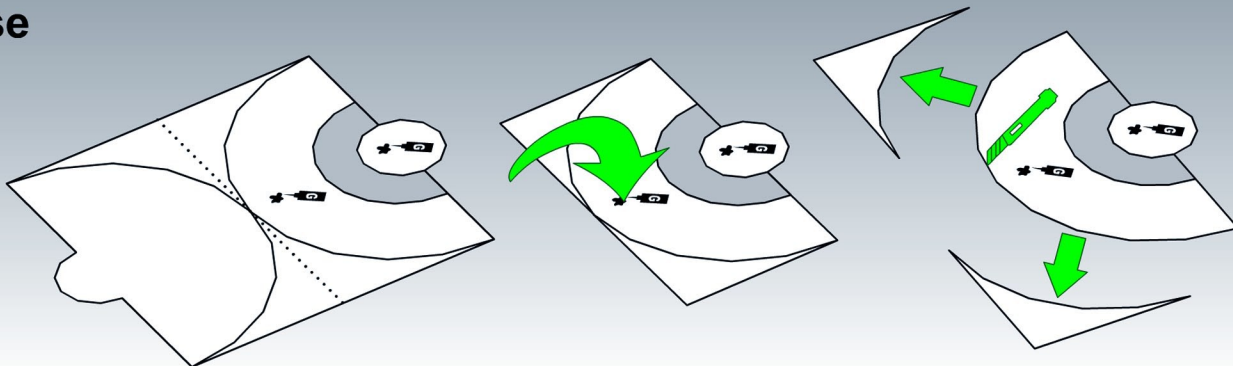


## Assembly

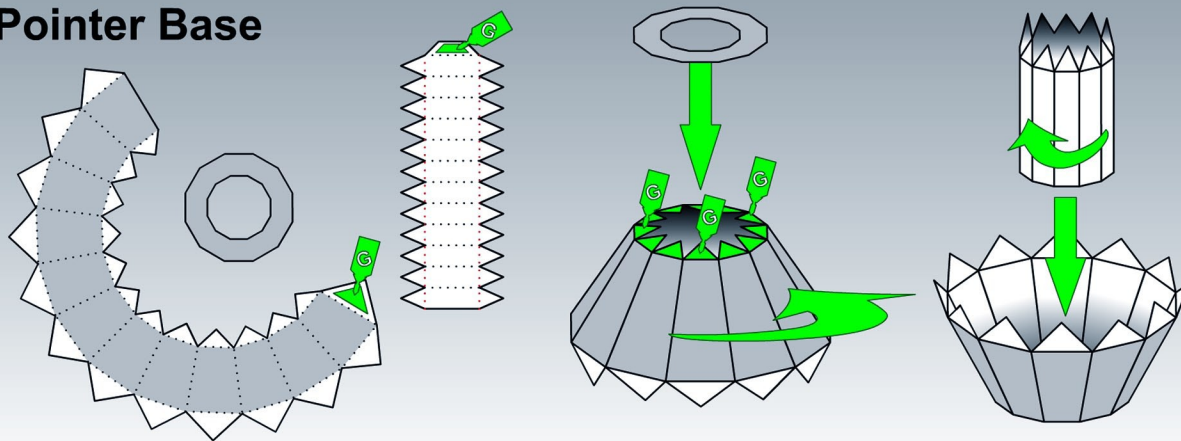




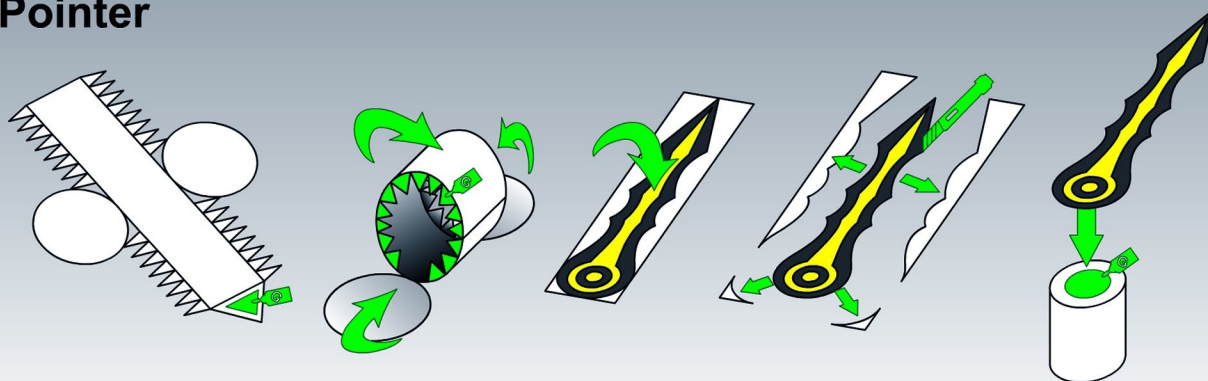
## Base



## Pointer Base



## Pointer



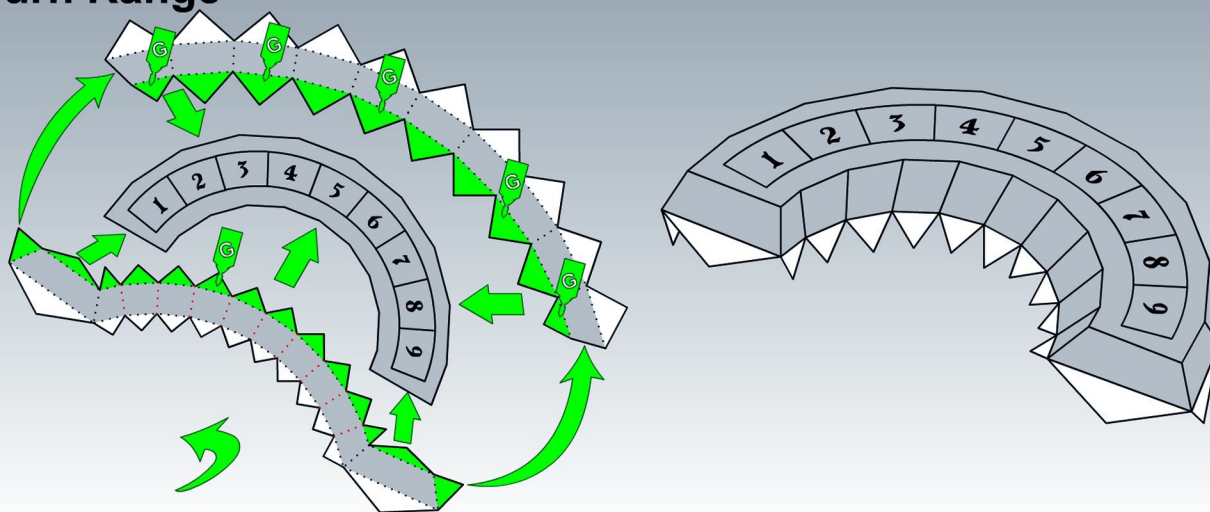




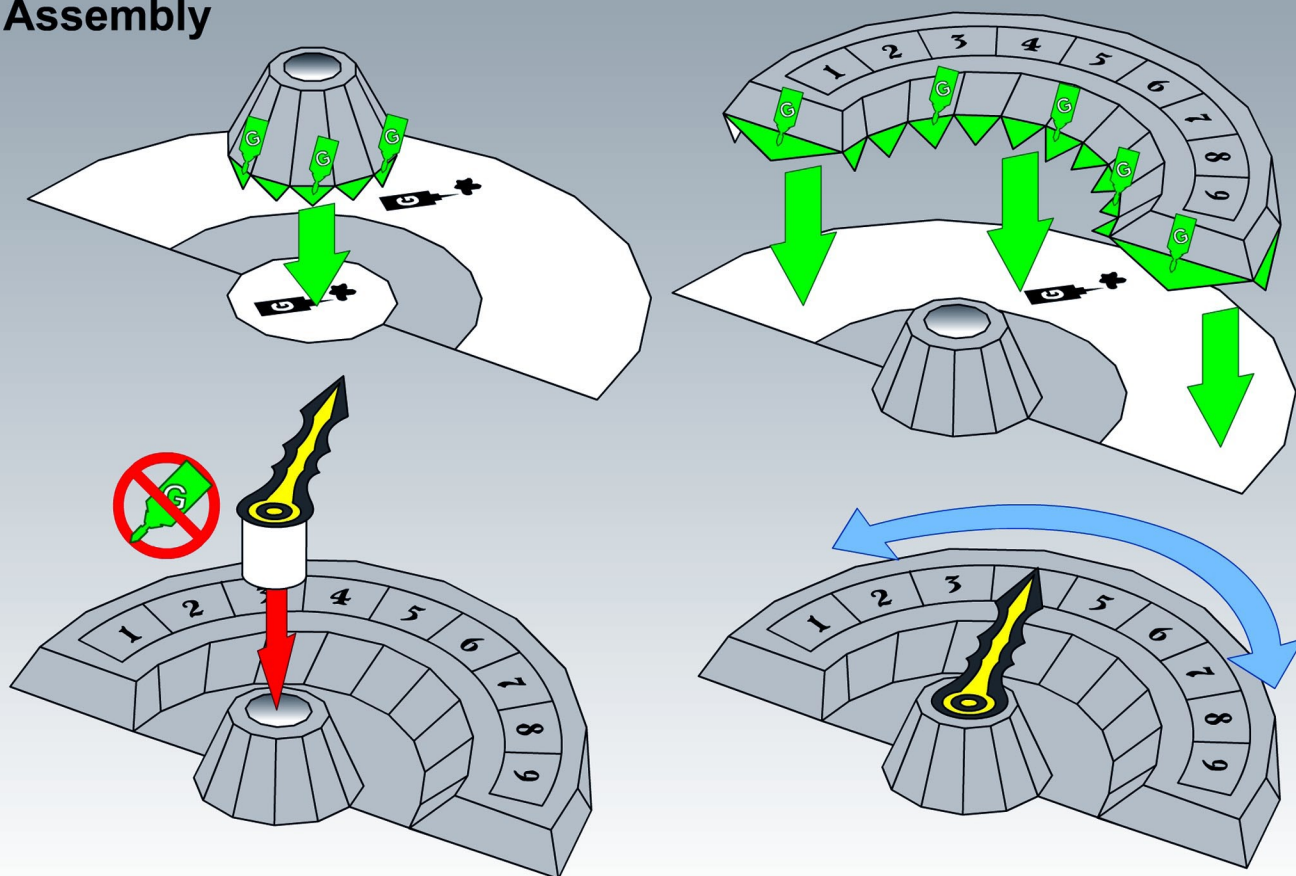
## Turn Counter Part 2

www.worldworksgames.com

### Turn Range



### Assembly

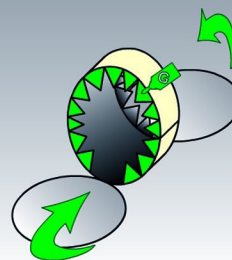
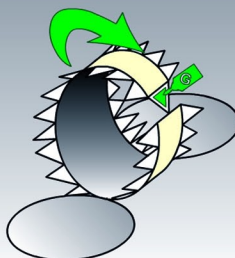
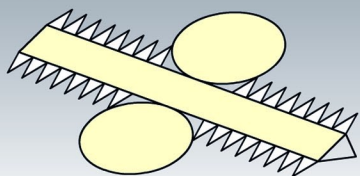




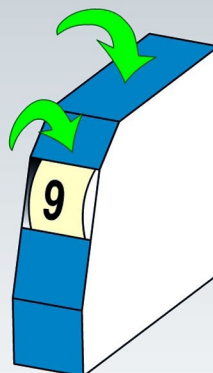
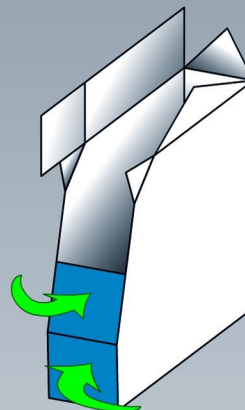
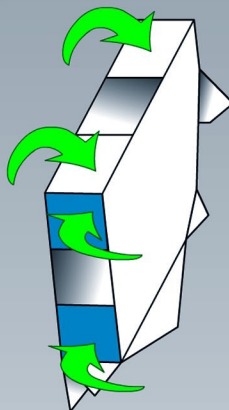
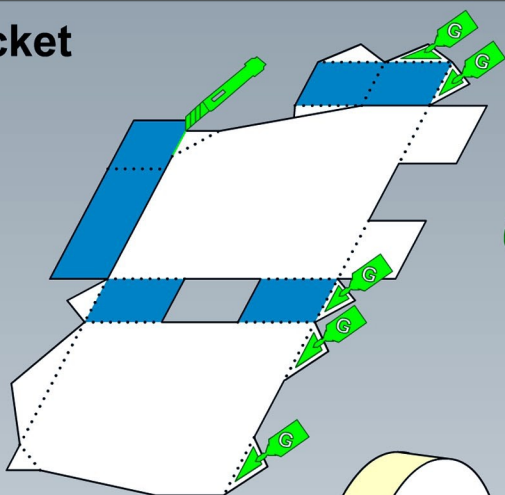
# Victory Points Wheel Part 1

www.worldworksgames.com

## Wheel



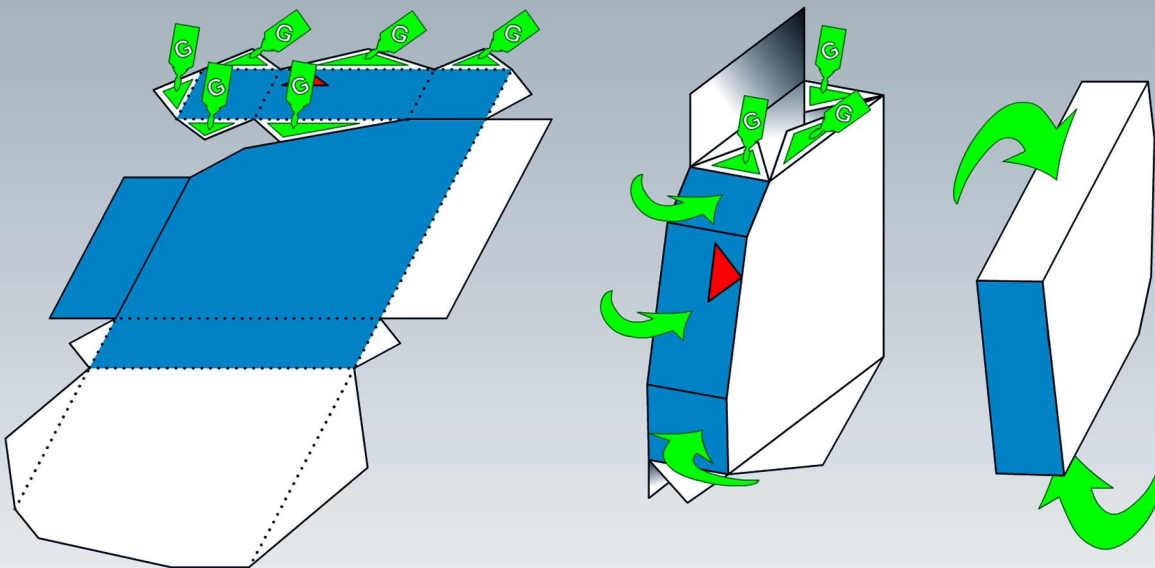
## Socket



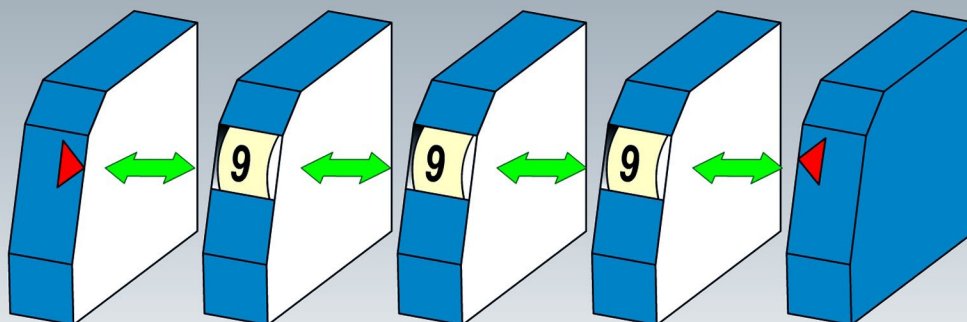




## End Brackets



## Assembly



**Make more wheels for higher ranges**